

2020 OUTSTANDING PROJECT



Figure 1. Finished latrines. Source: Selavip

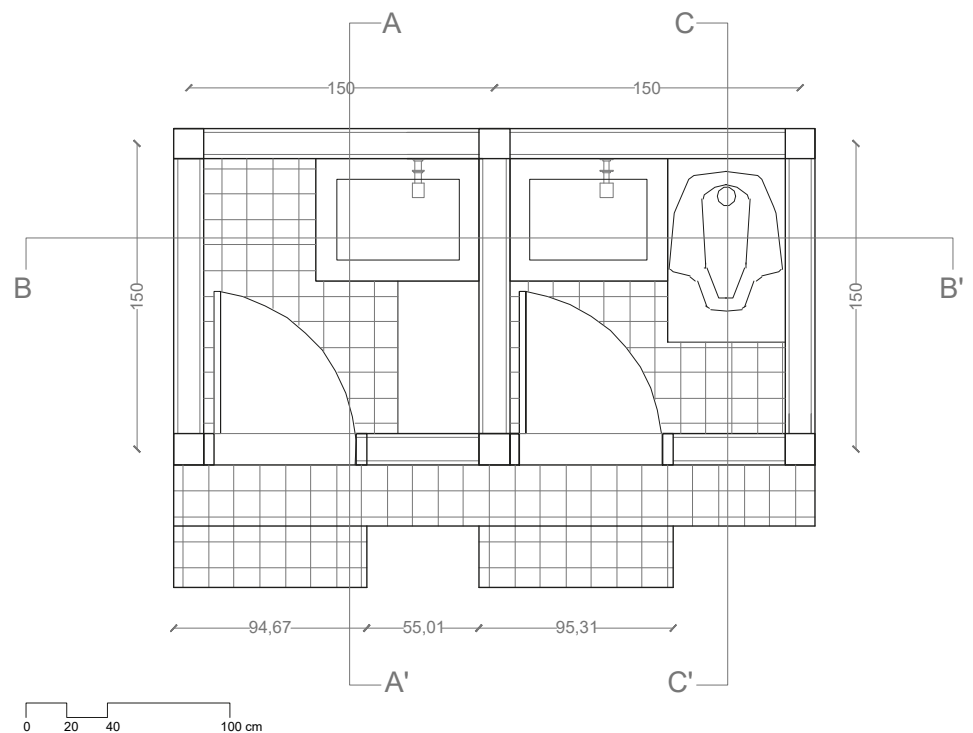


Figure 2. Latrine layout, graphical scale. Source: CIRMA, 2020.



Healthy latrines for ex-refugees families

Construction of 98 brick and cement latrines, that include toilet and sink, made for families of ex - refugees in extreme poverty located in Villa Tanah, Kupang, Indonesia. This project was carried out by the NGO CIRMA, with support from the New Zealand embassy and SELAVIP. And was executed in a participatory manner, involving the beneficiary families in the implementation.

Location	Tanah Village, Kupang, Indonesia
Duration	9 months
Execution year	2020
Benefited families	98 families

Construction methodology

Walls material

Reinforced concrete brick masonry

Foundation and flooring materials

Isolated stone foundations. Flooring covered with ceramic tiles.

Door materials

Frames made of concentrated aluminum

Roofing materials

Steel trusses covered with zinc spandek aluminum

Qualitative characteristics

Community Involvement

The involvement of beneficiary families in the project, through the planning of workdays and the provision of food for the workers, helps to accelerate the execution times.

Awareness

The involvement of beneficiary families in the construction of the latrines raises awareness about their care and maintenance, thereby ensuring the appropriation and success of the project

Health education

Educating the beneficiaries promotes a healthier lifestyle in the future.

Project financial summary

Construction of 98 latrines

SELAVIP funds	53,000 USD
Other resources	4,166 USD
Total cost of the project	57,166 USD

Unit cost per family	583,32 USD
----------------------	------------

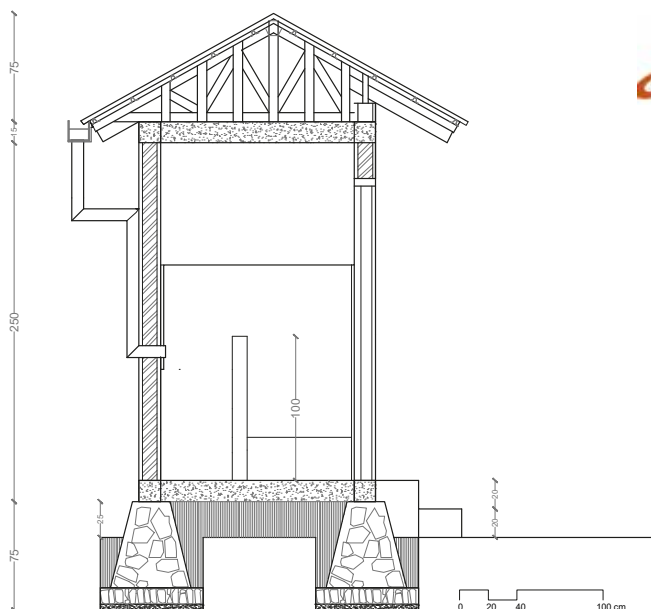


Figure 3. Latrine section A - A', graphical scale. Source: CIRMA, 2020.

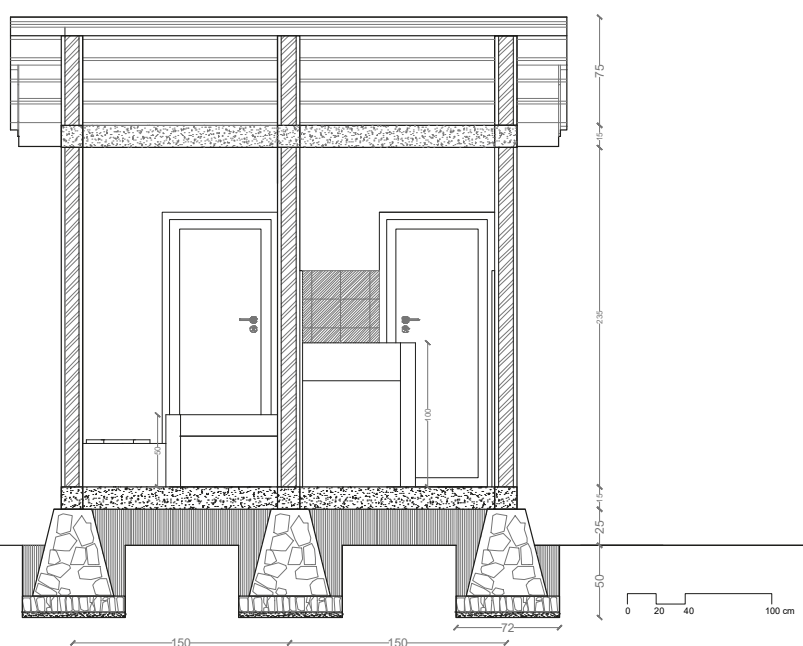


Figure 4. Latrine section B-B' , graphical scale. Source: CIRMA, 2020.

Contribution to Sustainable Development Goals completion



1 No poverty

The project provides access to basic sanitary services, reducing exposure to social and environmental vulnerability.

Goal 1.4 By 2030, ensure access to basic services. **Goal 1.5** Build the resilience of the poor and those in vulnerable situations and reduce their exposure and vulnerability to social and environmental shocks and disaster.



3 Good health and well - being

The latrines reduce environmental risk factors that contribute to the spread of diseases, thus improving the health and hygiene of their users

Goal 3.3 End water transmitted diseases and other transmissible diseases. **Goal 3.9** Substantially reduce the number of deaths and diseases produced by water, air and soil pollution.



6 Clean water and sanitation

The project facilitates access to clean water and high-quality sanitary services, which help eliminate open defecation.

Goal 6.2 Achieve access to adequate and equitable sanitation and hygiene for all and end open defecation. **Goal 6.3** enhance international cooperation for the increase of capacity in activities and programs related to water and sanitation. Efficient use of hydric resources and graywater treatment.



10 Reduced inequalities

The project allows for a more equitable distribution of water resources, focusing on raising awareness and encouraging appropriation.

Goal 10.2 Promote and enhance social, economic and political inclusion of all people. **Goal 10.3** Grants equal opportunities and reduce inequalities related to achievements obtention.



SUSTAINABLE DEVELOPMENT GOALS

The 2030 Agenda for Sustainable Development, considers 17 objectives with the aim of peace and prosperity for all. Their main focuses are: economic growth, education, health, social protection, job prospectives, climate change and environment protection.

Following, please find the objectives that this project contributes for the sustainable development of it's community .

List of required materials

1. Cement
2. Concrete bricks
3. Coral Reef Stone
4. Concrete Iron 6", 8", 10"
5. Zinc Spandek
6. Nails
7. Paint
8. Plamir
9. Gravel
10. Sand
11. Zinc Ridge
12. Reng Hollo Battens
13. Galvanized Canal C
14. PVC Pipe

Construction of the latrines



Figure 5. Construction of walls
Source: CIRMA, 2020.



Figure 6. Beam construction. Source: CIRMA-Centrum Inisiatif Rakyat Mandiri Facebook, 2020.



Figure 7. Galvanized canal C assembly.
Source: CIRMA, 2020.



Figure 8. Finished latrine. Source: CIRMA-Centrum Inisiatif Rakyat Mandiri Facebook, 2020.

Images of required materials



Figure 9. Cement



Figure 10. Concrete bricks



Figure 11. Coral Reef Stone



Figure 12. Concrete Iron 6"



Figure 13. Zinc Spandek T-72



Figure 14. Plamir



Figure 15. Gravel



Figure 16. Sand



Figure 17. Zinc ridge



Figure 18. Reng Hollo Battens



Figure 19. Galvanized Canal C



Figure 20. PVC Pipe

Sewer system

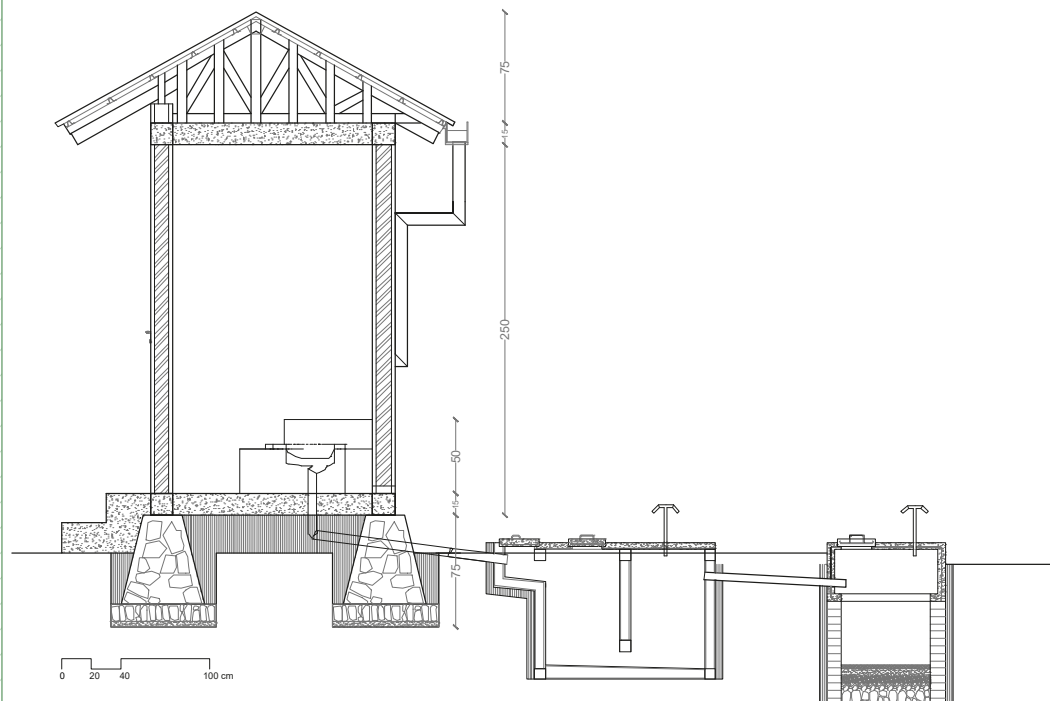


Figure 21. Section C-C' about sewer system diagram, graphical scale. Source: CIRMA, 2020.